

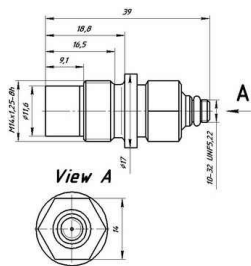


Dynamic Pressure Transducers NTIPS01,
NTIPS01-01

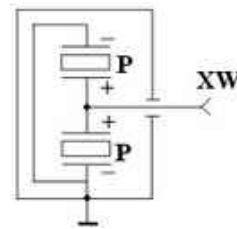


Parameter	Unit	NTIPS01	NTIPS01-03	NTIPS01-01	NTIP01-02
Sensitivity ($\pm 20\%$).....	pC/bar	20	400	20	400
Measured range.....	bar		0.1...250		
Resonance frequency.....	kHz		> 120		
Nonlinearity.....	-		< 2 % (from full scale)		
Acceleration sensitivity....	bar/g ^{*1}		< 0.001 5		
Operating temperature range.....	° C		- 50...+ 200		
Polarity.....	-		positive		
Capacitance.....	pF		7...11		
Insulation resistance.....	Ohm		$\geq 5^9 \cdot 10$		
Sensing element.....	-		quartz		
Housing material.....	-		Stainless steel		
Membrane material.....	-		Stainless steel		
Built-in cable length.....	m	-		2 ^{*2}	
Connector type.....	-		10-32UNF (BNC) ^{*2}		
Weight (without cable).....	gram		35		

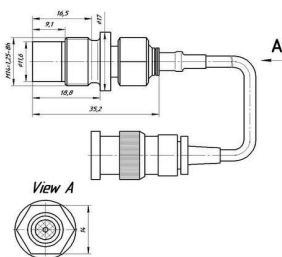
General view of NTIPS01



Electrical circuit of NTIPS01



General view of NTIPS01-01



Electrical circuit of NTIPS01-01

